



Forensic Pathologist Recruitment

**SAN MATEO COUNTY – OFFICE OF THE CORONER
CORONER ROBERT J. FOUCRAULT**

The mission of the Coroner's Office is to promptly investigate and determine the mode, manner, and cause of death of decedents under the Coroner's jurisdiction and to provide services in an efficient and courteous manner, respecting the needs of the families involved.

The Coroner's Office invites interested Board Certified Forensic Pathologists to contact Coroner Robert J. Foucault for more information about part-time or "as-needed" contract opportunities with San Mateo County.



**FOR MORE INFORMATION CONTACT CORONER
FOUCAULT: (650) 312-5233**

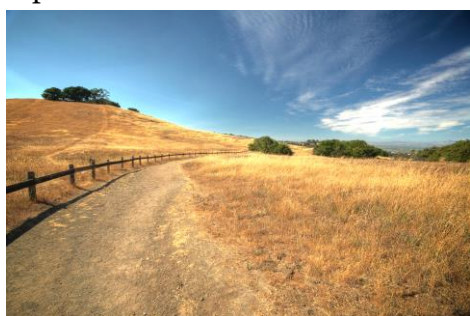
COUNTY OF **SAN MATEO**



SAN MATEO COUNTY – FORENSIC PATHOLOGIST RECRUITMENT

About San Mateo County

San Mateo County, founded in 1858, is a 744-square mile county nestled between San Francisco and Silicon Valley (Santa Clara) on the Bay Area Peninsula. San Mateo County has a population of approximately 762,357 and is home to Facebook, YouTube, Visa, and many more large corporations and tech companies. San Mateo County is an ideal place to live for both city-life and nature lovers. With the Pacific Ocean on the west and the San Francisco Bay on the east, there are plenty of sailing, surfing, and aquatic activities to partake in. The Santa Cruz Mountains, which run the length of the County, provide hundreds of



hiking, biking, and dog-friendly trails. Three major highways provide easy north to south access to art, athletics, theatre, and culinary experiences in both San Francisco and San Jose which are approximately 25 minutes from the heart of San Mateo County in either direction. Colleges such as Stanford University, University of California San Francisco, University of California Berkeley, and Notre Dame de Namur University are all in or

within a stone's throw of the County. San Mateo County is a short trip away from wine country in Napa, Yosemite National Park, and Lake Tahoe. Public transportation such as Caltrain, Bay Area Rapid Transit (BART), and Amtrak ACE train provide excellent commute-to-work options from the surrounding greater bay area. San Francisco International Airport which resides in unincorporated San Mateo County, Oakland International Airport, and San Jose International Airport provide endless opportunities for travel and leisure.



About San Mateo County – Office of the Coroner

The Coroner's Office is an independent medicolegal death investigation office in the County of San Mateo under the direction of elected Coroner, Robert J. Foucrault.

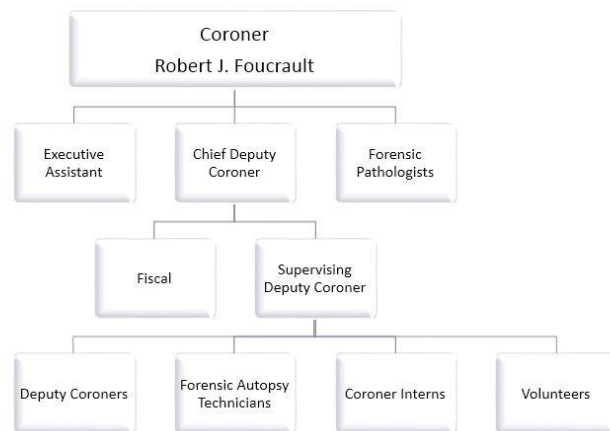
The Coroner's Office conducts medicolegal death investigations to determine the cause, manner, and circumstances of deaths meeting criteria as defined in California Government Code §27491 and California Health and Safety Code §102850.

SAN MATEO COUNTY – FORENSIC PATHOLOGIST RECRUITMENT

The Coroner is supported by a Chief Deputy Coroner who oversees the daily operation of the Coroner's Office, an Executive Assistant, and a Senior Accountant in the Administrative Division. Coroner Foucrault oversees the work of the Forensic Pathologists who are supported by two Forensic Autopsy Technicians in the Pathology Division. The Investigative Division is comprised of a Supervising Deputy Coroner and seven Deputy Coroners. An Office Assistant II supports the reception and clerical duties of the Administration and Investigations Division and additional support for the three divisions of the office is found through the assistance of part-time extra-help Deputy Coroners, Forensic Autopsy Technicians, and Coroner Intern/Fellows. The Coroner's Office offers a year-long Academic Internship program to current college students or working adults interested in a career change as well as a Save-A-Life program for at-risk youth.



County of San Mateo
CORONER'S OFFICE
ORGANIZATIONAL CHART



The Coroner's Office is the first California medicolegal death investigation agency to be accredited by the International Association of Coroners and Medical Examiners (IAC&ME), which requires all examinations to be completed by board certified Forensic Pathologists certified by the American Board of Forensic Medicine. Deputy Coroners are peace officers in the state of California under Penal Code §830.35, are certified by California Peace Officers Standards and Training (P.O.S.T) and are required to achieve certification as diplomats through the American Board of Medicolegal Death Investigation (ABMDI).

Future of San Mateo County – Office of the Coroner

Currently, the Pathology Division is located at the San Mateo Medical Center and the combined Administration and Investigation Division is located on a separate campus in San Mateo, approximately 15 minutes away. A new state-of-the-art Pathology and combined Administration and Investigation facility is currently underway and anticipated to be completed by fourth quarter 2022 as part of the County's capital project to update and expand the San Mateo Medical Center. New facilities, built in two separate phases of the project, will include a LODOX full-body x-ray, a main cooler and autopsy suite separate from an isolation cooler and autopsy suite, an observation room for homicide investigations, and a large conference room to double as a Department Operations Center (DOC) in a multi-fatality incident. Once Phase I and Phase II are complete (projected third quarter 2024), the Coroner's Office will allow for enhanced collaboration and communication between Forensic Pathologists and investigators.

SAN MATEO COUNTY – FORENSIC PATHOLOGIST RECRUITMENT

Duties of Forensic Pathologists

San Mateo County Coroner's Office takes pride in comprehensive, independent investigations alongside more than 23 law enforcement agencies in the county. When a death is reported to the Coroner's Office, the Coroner, or his deputy, responds to the location of death to perform the on-scene investigation, collect evidence, and document findings. The Deputy Coroner completes identification, locates and notifies next of kin, and transports the decedent to the Pathology Division. The Deputy Coroner issues an investigation report to both the Coroner and Forensic Pathologist who collaborate to determine the type of examination required to determine manner of death in each case.

Most autopsy examinations are performed within 24 hours of the death by the Forensic Pathologist. Forensic Pathologists may require toxicology tests, specialized consultations, or additional examination of microscopic tissue specimens to determine a cause of death. The Forensic Pathologist issues a final Pathology and Autopsy Report to the Coroner containing their medical diagnoses and final cause of death. The Coroner reviews the case including the scene and autopsy findings to determine a manner of death and signs the death certificate.

Additionally, the Forensic Pathologist is required to provide expert testimony whenever summoned by a court of law.

Compensation

In San Mateo County, Forensic Pathologists contract with the Coroner's Office to provide forensic pathology services. Under the current agreement, Forensic Pathologists are paid by case on the following fee schedule:

| Description of Service | Fee |
|--|------------|
| Clinical Inspection and/or Review of Records | \$500.00 |
| Limited Autopsy | \$800.00 |
| Full Autopsy | \$1,850.00 |
| Specialized protocol (SUID/homicide) | \$2,550.00 |

A clinical inspection refers to an external examination and review of case history and medical records. A review of records refers to an accepted non-removal case where the decedent does not undergo any type of physical examination but includes a thorough review of medical records and determination of a cause and manner of death. A limited autopsy refers to a partial internal examination. A full autopsy refers to a complete internal examination including cranial vault examination. A specialized protocol refers to a complete internal examination including cranial vault examination and following specialized protocols. The Forensic Pathologists will be required to submit monthly invoices specifying the types of services provided under the Agreement.

SAN MATEO COUNTY – FORENSIC PATHOLOGIST RECRUITMENT

In 2020, the Coroner's Office investigated over 2,200 deaths and accepted over 650 deaths into their jurisdiction for further investigation. Cause of death was determined by a Forensic Pathologist in over 550 of those cases. The total case load was shared between the contracted Forensic Pathologists. The International Association of Coroners and Medical Examiners accreditation standard for number of autopsies performed per year by a board-certified Forensic Pathologist is 250.

Qualifications and How to Apply

Eligible candidates must have an MD or DO degree, be board certified by the American Board of Pathology in Anatomic Pathology and Forensic Pathology and have or be willing to obtain a license to practice medicine in the state of California by the time their agreement has been signed. Please submit a cover letter and curriculum vitae (CV) to Coroner Robert Foucrault.



*For additional
information and
questions or to apply
contact:*

Robert J. Foucrault, Coroner

Rfoucrault@smcgov.org

(650) 312-5233

50 Tower Road

San Mateo, CA 94402

<https://coroner.smcgov.org>